

Fresh Air Input Units

Direct Driven Range

Packaged Air Handling for General Ventilation Applications



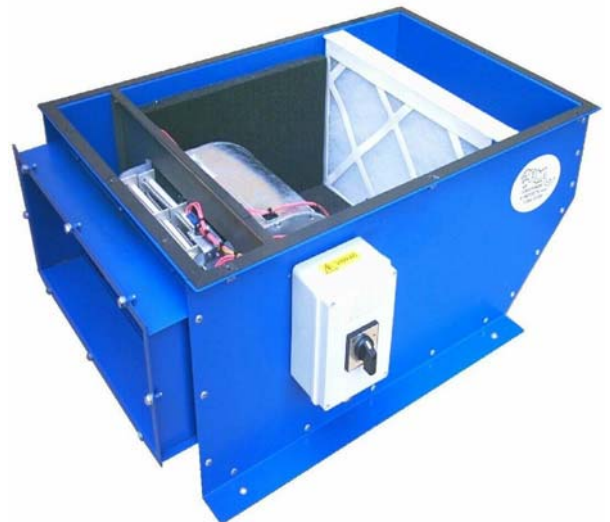
Internal Duct Mounted Unit

- Single Skin (SSK) construction as standard
- Optional 25mm Double Skin (DSK) Panels
- Galvanised or Powdercoat Finish
- G4 Panel Filter (As Standard)
- 25mm Pyrosorb thermal lining
- Top or Bottom Access Lid
- Vertical / Through-wall / Ceiling Mounting
- Optional duct / size connections available

Options and Accessories available on request

Weatherproof Roof Mounted Unit

- RAL 5017 Mid Blue powder coat finish
- G4 Panel Filter (As Standard)
- 25mm Pyrosorb Thermal Insulation
- Top Access Pitched Lid
- Weather Cowl on Air Intake
- Ducted Both Ends version available
- External flange duct connection



The Puma Large Range Fresh Air units are fitted with a Single or Three phase, double inlet Direct Driven centrifugal fan.

Fan Controls Package include:- On/Off Isolator, Electrical Termination Enclosure, Fan Fuse or Overload and Contactor, Fan Start Relay and Airflow Indication Switch with Volt Free Contacts.

Heater Controls Package include:- Heater Fuse/s, Heater Relay or Contactor, Element Overheat Thermostat, and Integral Thermostat/s or Electronic Multistage Thermostat & Sensor or Thyristor Controller & Sensor.

Improve your Environment with

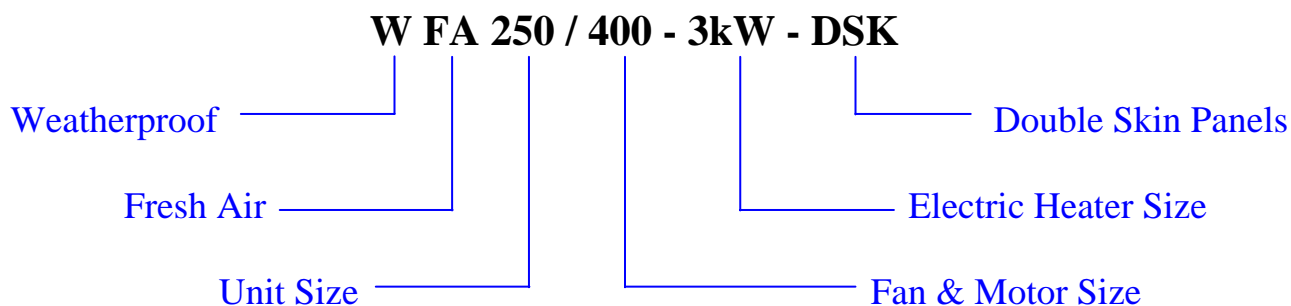


Performance Data

Model Number	Duty in m ³ /sec @ given External Static Pressure (Pa)										
	0	50	75	100	125	150	200	250	300	350	400
FA 200/200	0.09	0.08	0.08	0.07	0.07	0.06	0.05	0.01	-	-	-
FA 200/250	0.11	0.1	0.095	0.09	0.085	0.08	0.07	0.06	-	-	-
FA 200/300	0.14	0.13	0.125	0.12	0.11	0.1	0.09	0.085	0.06	-	-
FA 250/400	0.2	0.18	0.17	0.16	0.15	0.13	0.1	0.07	-	-	-
FA 250/500	0.21	0.19	0.18	0.17	0.16	0.15	0.12	-	-	-	-
FA 250/600	0.26	0.25	0.24	0.23	0.22	0.21	0.19	0.17	-	-	-
FA 300/700	0.34	0.32	0.29	0.27	0.22	0.2	-	-	-	-	-
FA 350/850	0.4	0.39	0.37	0.33	0.3	0.23	0.1	-	-	-	-
FA 350/1000	0.48	0.43	0.4	0.38	0.31	0.24	0.1	-	-	-	-
FA 350/1200	0.57	0.56	0.55	0.55	0.54	0.49	0.41	0.25	0.01	-	-
FA 400/1300	0.61	0.61	0.6	0.6	0.59	0.58	0.56	0.49	0.39	-	-
FA 400/1500	0.71	0.71	0.7	0.69	0.69	0.68	0.63	0.56	-	-	-
FA 400/1700	0.78	0.76	0.74	0.73	0.72	0.7	0.65	0.54	-	-	-
FA 450/2500	1.1	1.07	1.03	0.97	0.89	0.84	0.72	0.55	-	-	-
FA 550/3600	1.72	1.6	1.55	1.5	1.43	1.35	1.15	0.89	-	-	-

For higher performances please ask about our **PENTAPOST BELT DRIVEN** Range

Typical Part Code:



*Over 20 years supplying the
Ventilation and Air Conditioning
Industry*



Electrical and Sound Data

Model Number	Motor Running Current (Amps)	Motor Starting Current (Amps)	Motor Power (Watts)	Induct Sound Power Levels dBW @ Octave Band Mid Frequency HZ								Breakout Noise Level dBA*	
				63	125	250	500	1K	2K	4K	8K	SSK	DSK
FA 200/200	0.3	0.75	67	32	34	46	55	56	54	51	50	40	25
FA 200/250	0.44	1.1	99	25	29	38	43	39	40	34	26	36	21
FA 200/300	0.8	2.0	175	63	57	55	54	54	47	41	32	44	29
FA 250/400	0.8	2.0	190	40	44	46	52	52	50	45	41	41	26
FA 250/500	0.9	2.25	140	71	69	62	54	51	47	39	30	43	28
FA 250/600	1.2	3.0	273	68	62	61	61	59	54	47	37	48	33
FA 300/700	1.5	3.75	92	79	77	70	68	65	61	53	46	49	34
FA 350/850	1.9	4.75	184	67	69	70	69	66	62	59	54	44	29
FA 350/1000	2.3	5.75	300	71	72	73	72	70	66	62	57	48	33
FA 350/1200	4.3	10.75	373	75	72	67	63	61	60	58	45	50	35
FA 400/1300	3.5	8.75	300	81	78	73	69	67	66	64	51	55	40
FA 400/1500	4.4	11.0	420	72	70	62	60	56	53	46	37	46	31
FA 400/1700	3.5	8.75	300	76	74	66	64	60	57	49	41	53	38
FA 450/2500	6.8	17.5	550	80	78	70	68	64	61	53	45	61	46
FA 550/3600	4.3**	21.5**	1100	87	84	82	81	79	75	67	55	64	49
FA 550/3700	4.7**	23.5**	1500	87	88	89	88	86	82	78	73	71	56

* The dBA quoted is the mean 'A' weighted sound pressure level measured at a distance of 3m. It is included for comparative purposes only and the actual sound level experienced will depend on the acoustic characteristics of the area being served. Ductwork and Silencers also have a major influence on breakout noise and actual noise levels in the system.

** 380/415 V ac Three Phase Motor

Available Electric Heaters @ 220/240 V ac 1Ph & N, 50 Hz

Heater Capacity	1 kW	1.5 kW	2 kW	2.5 kW	3 kW	4 kW	5 kW	6 kW	7.5 kW
Running Current (Amps)	4.3	6.5	8.7	10.9	13	17.4	21.7	26	32.6

Available Electric Heaters @ 380/415 V ac 3Ph & N, 50 Hz

Heater Capacity	9 kW			12 kW			15 kW			18 kW			21 kW		
Running Current (Amps)	R	S	T	R	S	T	R	S	T	R	S	T	R	S	T
	13	13	13	17.4	17.4	17.4	21.7	21.7	21.7	26	26	26	30.4	30.4	30.4
Heater Capacity	24 kW			27 kW			30 kW			36 kW					
Running Current (Amps)	R	S	T	R	S	T	R	S	T	R	S	T			
	34.8	34.8	34.8	39.1	39.1	39.1	43.5	43.5	43.5	52.2	52.2	52.2			

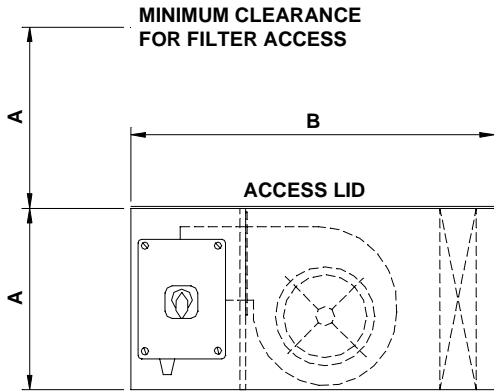
To help select heater the following formula can be used:- Duty (m³/s) x 1.2 x Temp. Difference (°C) = Heater (kW)

Options and Accessories

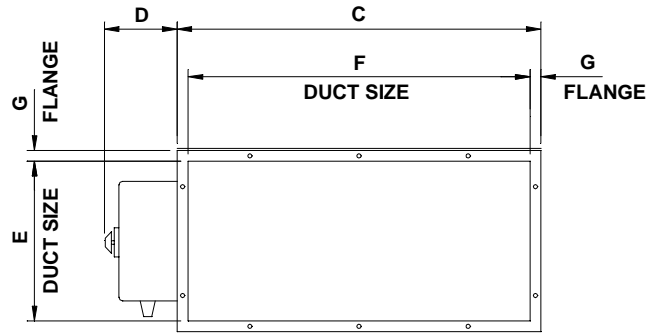
VCD	Volume Control Damper	WL	Weather Louvre
LPHW	Low Pressure Hot Water Coil	SC	Internal Speed Controller
CW	Chilled Water Coil	WMSC	Wall Mounted Speed Controller
DX	DX Cooling Coil	TC	Thyristor Controller & Duct Sensor
BF	Bag Filter F5 to F9	ET	Electronic Thermostat & Duct Sensor
HEF	High Efficiency Panel Filters F6	WM	Through-Wall Mounted
MT	Manometer c/w tappings	VM	Vertically Mounted
FPS	Filter Pressure Switch c/w tappings	CM	Ceiling Mounted
SIL	Silencers	CS	Circular Spigot Connections
SSK	Single Skin	DSK	Double Skin (25mm Insulated Panels)

Dimensional Data

Internal Duct Mounted Unit - FA

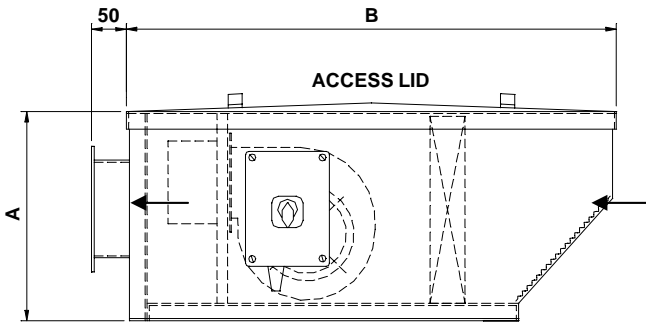


SIDE VIEW

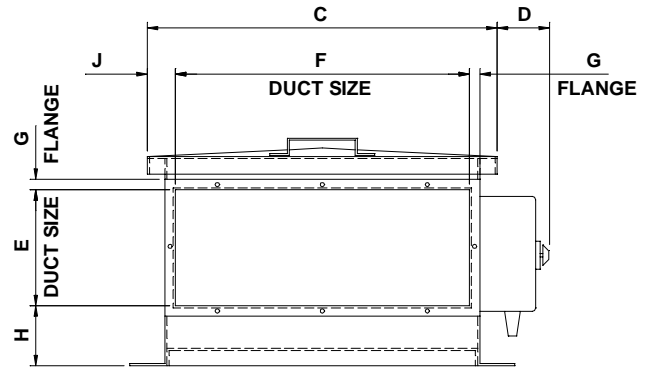


END VIEW (INTAKE)

Weatherproof Roof Mounted Unit - WFA



SIDE VIEW



END VIEW (DISCHARGE)

Model Number	Dimensions In Millimetres											WEIGHT
	A		B	C		D	E	F	G	H	J	
	SSK	DSK		SSK	DSK							
FA 200	200	250	450	450	500	100	166	420	15	-	-	20 Kg
FA 250	250	300	500	500	550	100	220	470	15	-	-	25 Kg
FA 300	300	350	600	500	550	100	260	460	20	-	-	30 Kg
FA 350	350	400	700	600	650	175	310	560	20	-	-	40 Kg
FA 400	415	465	700	600	650	175	375	560	20	-	-	50 Kg
FA 450	450	500	700	700	750	175	410	660	20	-	-	60 Kg
FA 550	550	600	900	800	850	175	500	750	25	-	-	90 Kg
WFA 200	225	-	650	500	-	75	126	314	13	50	93	25 Kg
WFA 250	300	-	750	500	-	75	166	420	15	86	40	35 Kg
WFA 300	350	-	800	600	-	75	166	420	15	125	90	40 Kg
WFA 350	400	-	850	700	-	75	220	470	15	135	115	45 Kg
WFA 400	450	-	950	800	-	150	260	460	20	155	170	60 Kg
WFA 450	500	-	1000	800	-	150	310	560	20	120	120	70 Kg
WFA 550	600	-	1150	1000	-	150	375	560	20	195	220	100 Kg

Unit 6, Viscount Court, Walworth Industrial Estate, Andover, Hampshire SP10 5NW England
 Telephone: 01264 333305 – Facsimile: 01264 333310 – Email: sales@pumaproducts.co.uk

www.pumaproducts.co.uk

Due to our policy of continued improvement and development, we reserve the right to alter designs and specifications without notice.

© Copyright 2006 – Puma Products Limited TM (Rev E)