

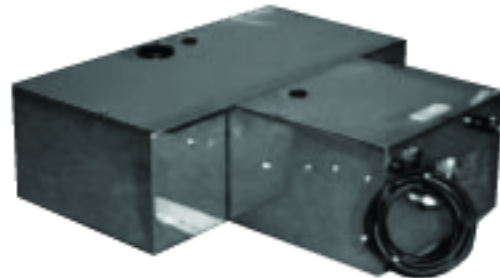


Hot Water Condensate Pumps

Designed specifically for efficient disposal of Hot Water Flushdown from Steam Generating Humidifiers and Cooling Coil Condensate removal from Air-Conditioning Systems.



RG 25 X RG 50 X



RG 25 XL RG 50 XL

Single Pump Units

- Guaranteed SELF PRIMING capability
- PUMP HEAD From 3.5 to 20 metres
- Inline Filter/Strainer #
- Automatic Float Control Operation
- Side or Top Discharge Compression Fitting
- Auto Changeover panels
- Water temperature up to 100°C (212°F)
- Low Profile Units 102mm to 205mm
- Stainless Steel Construction
- High level Alarm Switch Facility*
- Twelve Month Warranty
- Flood Alarm Panels

not BM 4 XS

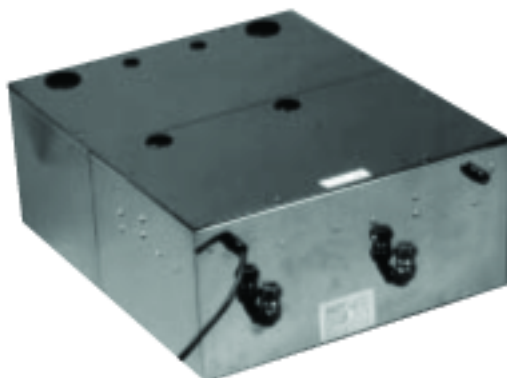
*For connection to Flood Alarm Panels



Auto Changeover Panels



Flood Alarm Panels



2 x RG 25 XL



2 x RG 50 XL

Twin Pump Units

The Pump Pumps are ideally suited for use with Humidification systems incorporating automatic flushing. If the humidification plant forms part of an Air Conditioning System, the Cooling coil condensate can also be passed to the unit for disposal. The water is collected in a common Sump Tank where the special float switch arrangement controls the unit's operation.

The low profile design enables the pump to be sited under Raised Modular Floors in Computer Rooms or in some cases within the Air-Conditioning Plant.

Other applications include waste removal from Hand Basins, Sinks, or Chemical cleaning trays where gravity drains are inaccessible.



Technical Performance and Specifications

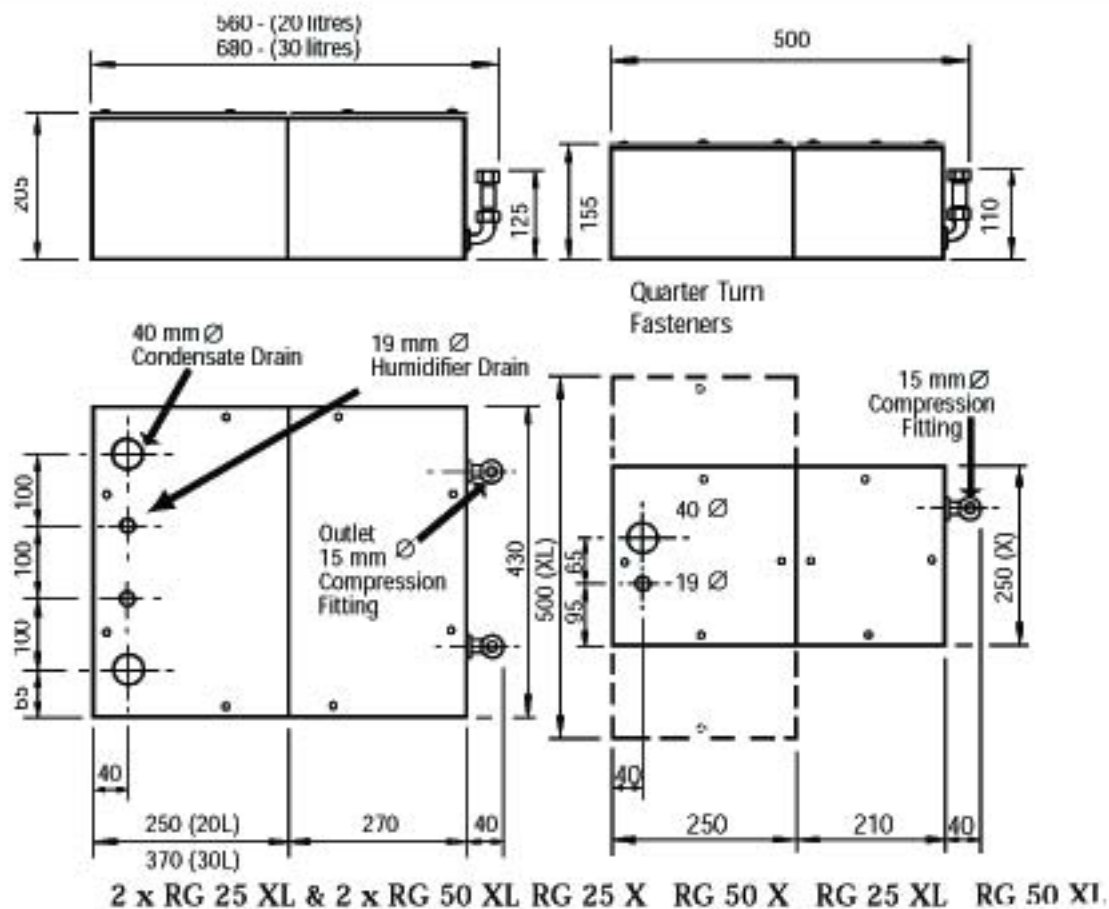
Model Number	Maximum Head Metres	Flow Rate Lit/Hr	Overall Height Millimetres	Sump Capacity Litres	Motor Power Watts	Running Current Amps	Nett Weight Kg	Mains Supply Voltage	Maximum# Discharge Pipe Length
RG 25 X	15	272	152	9	360	1.1	10	**	22m
RG 25 XL	15	272	152	18	360	1.1	12	**	44m
RG 50 X	30	272	152	9	600	2.4	10	**	22m
RG 50 XL	30	272	152	18	600	2.4	12	**	44m
2 x RG 25 XL	15	272	205	20	360	1.1	15*	**	48m
2 x RG 50 XL	30*	272	205	30	600	2.4	20*	**	70m

* * *

* Data per pump motor

Due to volume of Water Return Volume

Dimensional Data



PUMA AIR CONDITIONING

Unit 6, Viscount Court, Walworth Industrial Estate, Andover, Hampshire SP10 5NW, England.

Telephone: Andover (01264) 333305 Facsimile: (01264) 333310 email: pumair@aol.com

For installation and maintenance instructions refer to separate Data Sheet IC 003, Puma Range of Hot Water condensate Pumps © 1998 - Registered Designs. Due to our policy of continued improvement and development, we reserve the right to alter designs and specifications without notice.