

Twin Fan Extract Units

Direct Driven Range

Smart Air Handling for compliance with Part L Building Regulations



- Galvanised Steel Tray Construction
- 25mm Double Skin Panels (DSK) option
- Airflows from 0.01m³/s up to 2.0m³/s
- Run & Standby or Duty Shared configuration
- Top or Bottom Access Panel
- Ideal for low ceiling void applications

- Single or Three phase, Direct Driven centrifugal fans.
- Fan Auto Changeover Facility available for Run and Standby configuration, either with controls wired integrally or via Remote Auto Changeover Panel.
- Back draught flaps fitted to prevent short circuiting effect.



Fan Controls Package include:- On/Off Isolator, Electrical Termination Enclosure, Fan Fuse or Overload and Contactor, Fan Start Relay and Airflow Changeover Switches. Remote Airflow Indication available via Volt Free Contacts.

Improve your Environment with



Performance Data

RUN & STANDBY CONFIGURATION

Model Number	Duty in m ³ /sec @ given External Static Pressure (Pa)										
	0	50	75	100	125	150	200	250	300	350	400
TFE 200/200	0.1	0.09	0.08	0.08	0.07	0.07	0.06	0.05	0.01	-	-
TFE 200/250	0.12	0.11	0.1	0.095	0.09	0.085	0.08	0.07	0.06	-	-
TFE 200/300	0.15	0.14	0.13	0.125	0.12	0.11	0.1	0.09	0.085	0.06	-
TFE 250/400	0.2	0.2	0.18	0.17	0.16	0.15	0.13	0.1	0.07	-	-
TFE 250/500	0.21	0.2	0.19	0.18	0.17	0.16	0.15	0.12	-	-	-
TFE 250/600	0.27	0.26	0.25	0.24	0.23	0.22	0.21	0.19	0.17	-	-
TFE 300/700	0.36	0.34	0.32	0.29	0.27	0.22	0.2	0.1	-	-	-
TFE 350/850	0.42	0.4	0.39	0.37	0.33	0.3	0.23	0.1	-	-	-
TFE 350/1000	0.53	0.48	0.43	0.4	0.38	0.31	0.24	0.1	-	-	-
TFE 350/1200	0.59	0.57	0.56	0.55	0.55	0.54	0.49	0.41	0.25	0.01	-
TFE 400/1300	0.62	0.61	0.61	0.6	0.6	0.59	0.58	0.56	0.49	0.39	-
TFE 400/1500	0.72	0.71	0.71	0.7	0.69	0.69	0.68	0.63	0.56	-	-
TFE 400/1700	0.78	0.78	0.76	0.74	0.73	0.72	0.7	0.65	0.54	-	-
TFE 450/2500	1.27	1.2	1.1	1.07	1.03	0.97	0.89	0.84	0.72	0.55	-
TFE 550/3600	1.8	1.72	1.6	1.55	1.5	1.43	1.35	1.15	0.89	-	-
TFE 550/3700	1.79	1.75	1.72	1.68	1.66	1.58	1.51	1.42	1.36	1.3	1.16
TFE 550/4500	2.1	2.05	1.92	1.85	1.8	1.7	1.6	1.25	1.0	-	-

DUTY SHARED CONFIGURATION

Model Number	Duty in m ³ /sec @ given External Static Pressure (Pa)										
	0	50	75	100	125	150	200	250	300	350	400
TFE 200/200	0.2	0.18	0.16	0.16	0.14	0.14	0.12	0.1	0.02	-	-
TFE 200/250	0.24	0.22	0.2	0.19	0.18	0.17	0.16	0.14	0.12	-	-
TFE 200/300	0.3	0.28	0.26	0.15	0.24	0.22	0.2	0.18	0.17	0.12	-
TFE 250/400	0.4	0.4	0.36	0.34	0.32	0.3	0.26	0.2	0.14	-	-
TFE 250/500	0.42	0.42	0.38	0.36	0.34	0.32	0.3	0.24	-	-	-
TFE 250/600	0.54	0.52	0.5	0.48	0.46	0.44	0.42	0.38	0.34	-	-
TFE 300/700	0.72	0.68	0.64	0.58	0.54	0.44	0.4	-	-	-	-
TFE 350/850	0.84	0.8	0.78	0.74	0.66	0.6	0.46	0.2	-	-	-
TFE 350/1000	1.06	0.96	0.86	0.8	0.76	0.62	0.48	0.2	-	-	-
TFE 350/1200	1.18	1.14	1.12	1.1	1.1	1.08	0.98	0.82	0.5	0.01	-
TFE 400/1300	1.24	1.22	1.22	1.2	1.2	1.18	1.16	1.12	0.98	0.78	-
TFE 400/1500	1.44	1.42	1.42	1.4	1.38	1.38	1.36	1.26	1.12	-	-
TFE 400/1700	1.56	1.56	1.52	1.48	1.46	1.44	1.4	1.3	1.08	-	-
TFE 450/2500	2.54	2.2	2.14	2.06	1.94	1.78	1.68	1.44	1.1	-	-
TFE 550/3600	3.6	3.44	3.2	3.1	3.0	2.86	2.7	2.3	1.78	-	-
TFE 550/3700	3.58	3.5	3.44	3.36	3.32	3.16	3.02	2.84	2.72	2.6	2.32
TFE 550/4500	4.2	4.1	3.84	3.7	3.6	3.4	3.2	2.5	2.0	-	-

Electrical and Sound Data

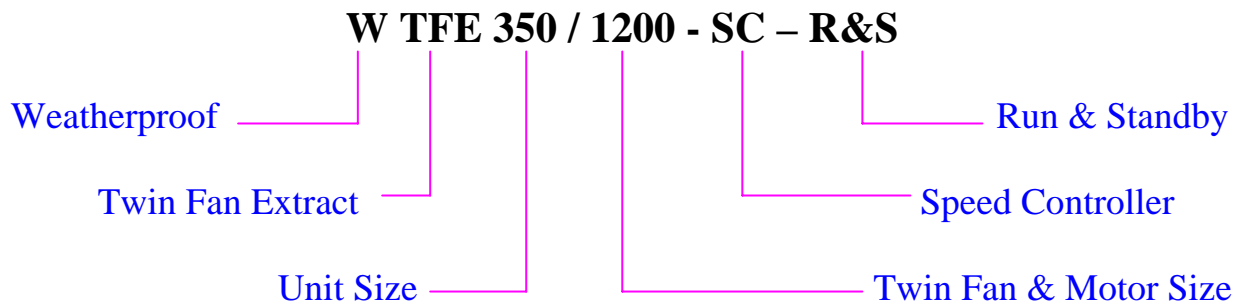
Model Number	Running Current per Fan Motor (Amps)	Starting Current per Fan Motor (Amps)	Power per Fan Motor (Watts)	Induct Sound Power Levels dBW @ Octave Band Mid Frequency HZ								Noise Breakout Level dBA*	
				63	125	250	500	1K	2K	4K	8K	SSK***	DSK***
TFE 200/200	0.3	0.75	67	32	34	46	55	56	54	51	50	40	25
TFE 200/250	0.44	1.1	99	25	29	38	43	39	40	34	26	36	21
TFE 200/300	0.8	2.0	105	63	57	55	54	54	47	41	32	44	29
TFE 250/400	0.8	2.0	190	40	44	46	52	52	50	45	41	41	26
TFE 250/500	0.9	2.25	140	71	69	62	54	51	47	39	30	43	28
TFE 250/600	1.2	3.0	273	68	62	61	61	59	54	47	37	48	33
TFE 300/700	1.5	3.75	92	79	77	70	68	65	61	53	46	49	34
TFE 350/850	1.9	4.75	184	67	69	70	69	66	62	59	54	44	29
TFE 350/1000	2.3	5.75	300	71	72	73	72	70	66	62	57	48	33
TFE 350/1200	4.3	10.75	350	75	72	67	63	61	60	58	45	50	35
TFE 400/1300	3.5	8.75	300	81	78	73	69	67	66	64	51	55	40
TFE 400/1500	4.4	11.0	420	72	70	62	60	56	53	46	37	46	31
TFE 400/1700	3.5	8.75	300	76	74	66	64	60	57	49	41	53	38
TFE 450/2500	6.8	17.5	550	80	78	70	68	64	61	53	45	61	46
TFE 550/3600	4.3**	21.5**	1100	87	84	82	81	79	75	67	55	64	49
TFE 550/3700	4.7**	23.5**	1500	87	88	89	88	86	82	78	73	71	56
TFE 550/4500	4.5**	22.5**	1100	79	76	74	72	67	64	58	48	62	47

* The dBA quoted is the mean 'A' weighted sound pressure level measured at a distance of 3m. It is included for comparative purposes only and the actual sound level experienced will depend on the acoustic characteristics of the area being served. Ductwork and Silencers also have a major influence on breakout noise and actual noise levels in the system.

** 380/415 V ac Three Phase Motor.

*** To obtain sound levels for twin fans running together as duty shared, add 3dB to the sound figures above.

Typical Part Code:

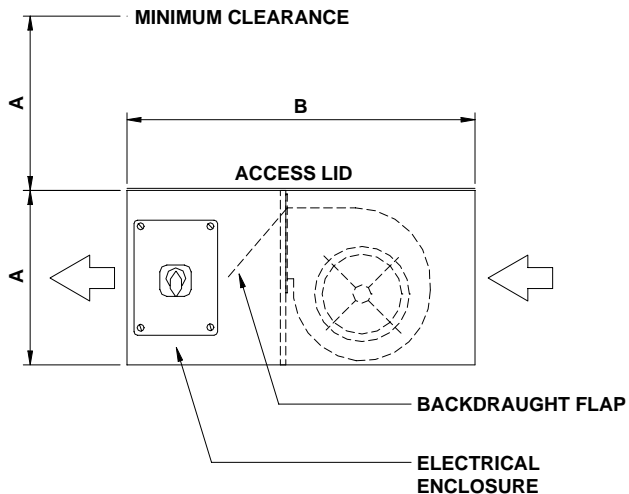


Remote Auto Changeover Panel

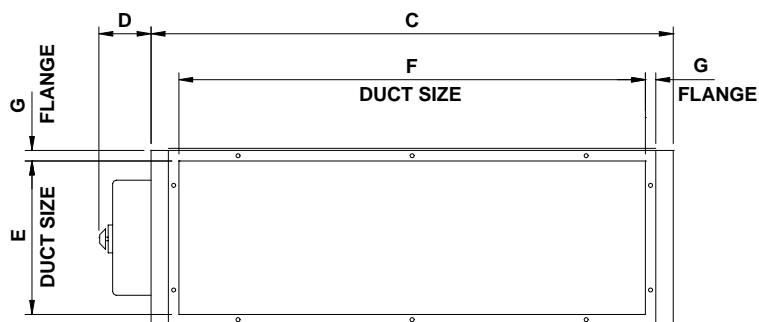


- Manual select switch for Fan 1 or Fan 2 operation. This can be used to balance the use of each fan to prolong motor life.
- Fan 1 and Fan 2 Run / Fail indication lamps.
- Each fan fitted with Airflow micro switch as standard for fan run / fail indication to panel.
- 230Vac 1Ph mains supply required.

Dimensional Data



SIDE VIEW



END VIEW

Model Number	Dimensions In Millimetres									
	A		B	C		D	E	F	G	WEIGHT
	SSK	DSK		SSK	DSK					
TFE 200	200	250	450	650	650	100	166	570	15	30 Kg
TFE 250	250	300	600	850	850	100	210	770	15	35 Kg
TFE 300	300	350	600	1050	1050	100	260	960	20	40 Kg
TFE 350	350	400	700	1250	1250	175	310	1160	20	60 Kg
TFE 400	415	465	900	1250	1250	175	375	1160	20	70 Kg
TFE 450	450	500	900	1250	1250	175	410	1160	20	90 Kg
TFE 550	550	600	1100	1450	1450	175	500	1350	25	120 Kg

Options and Accessories available on request

- | | |
|---|---|
| <p>VCD Volume Control Damper</p> <p>PSD Positive Shutoff Damper</p> <p>SC Internal Speed Controller</p> <p>VM Vertically Mounted</p> <p>SIL Silencers</p> <p>R&S Run & Standby Fans</p> <p>DS Duty Shared Fans</p> | <p>WL Weather Louvre</p> <p>WMSC Wall Mounted Speed Controller</p> <p>ACP Deluxe Auto Changeover Panel</p> <p>CM Ceiling Mounted</p> <p>CS Circular Spigot Connections</p> <p>SSK Single Skin Construction</p> <p>DSK Double Skin Option</p> |
|---|---|

Unit 6, Viscount Court, Walworth Industrial Estate, Andover, Hampshire SP10 5NW England
 Telephone: 01264 333305 – Facsimile: 01264 333310 – Email: sales@pumaproducts.co.uk

www.pumaproducts.co.uk

Due to our policy of continued improvement and development, we reserve the right to alter designs and specifications without notice.

© Copyright 2006 – Puma Products Limited™ (Rev A)