

Twin Fan Fresh Air Units

Direct Driven Range

Packaged Air Handling for Low Profile Ventilation Applications



- Galvanised Steel Tray Construction
- 25mm Double Skin Panels (DSK) option
- G4 Panel Filter (As Standard)
- Run & Standby or Duty Shared configuration
- Top or Bottom Access Lid
- Ideal for low ceiling void applications

- Single or Three phase, Direct Driven centrifugal fans.
- Fan Auto Changeover Facility available for Run and Standby configuration, either with controls wired integrally or via Remote Auto Changeover Panel.
- Back draught flaps fitted to prevent short circuiting effect.



Fan Controls Package include:- On/Off Isolator, Electrical Termination Enclosure, Fan Fuse or Overload and Contactor, Fan Start Relay and Airflow Indication Switch with Volt Free Contacts.

Heater Controls Package include:- Heater Fuse/s, Heater Relay or Contactor, Element Overheat Thermostat, and optional Integral Thermostat/s or Electronic Multistage Thermostat & Sensor or Thyristor Controller & Sensor.

Improve your Environment with



Performance Data

RUN & STANDBY CONFIGURATION

Model Number	Duty in m ³ /sec @ given External Static Pressure (Pa)										
	0	50	75	100	125	150	200	250	300	350	400
TFA 200/200	0.09	0.08	0.08	0.07	0.07	0.06	0.05	0.01	-	-	-
TFA 200/250	0.11	0.1	0.095	0.09	0.085	0.08	0.07	0.06	-	-	-
TFA 200/300	0.14	0.13	0.125	0.12	0.11	0.1	0.09	0.085	0.06	-	-
TFA 250/400	0.2	0.18	0.17	0.16	0.15	0.13	0.1	0.07	-	-	-
TFA 250/500	0.21	0.19	0.18	0.17	0.16	0.15	0.12	-	-	-	-
TFA 250/600	0.26	0.25	0.24	0.23	0.22	0.21	0.19	0.17	-	-	-
TFA 300/700	0.34	0.32	0.29	0.27	0.22	0.2	-	-	-	-	-
TFA 350/850	0.4	0.39	0.37	0.33	0.3	0.23	0.1	-	-	-	-
TFA 350/1000	0.48	0.43	0.4	0.38	0.31	0.24	0.1	-	-	-	-
TFA 350/1200	0.57	0.56	0.55	0.55	0.54	0.49	0.41	0.25	0.01	-	-
TFA 400/1300	0.61	0.61	0.6	0.6	0.59	0.58	0.56	0.49	0.39	-	-
TFA 400/1500	0.71	0.71	0.7	0.69	0.69	0.68	0.63	0.56	-	-	-
TFA 400/1700	0.78	0.76	0.74	0.73	0.72	0.7	0.65	0.54	-	-	-
TFA 450/2500	1.1	1.07	1.03	0.97	0.89	0.84	0.72	0.55	-	-	-
TFA 550/3600	1.72	1.6	1.55	1.5	1.43	1.35	1.15	0.89	-	-	-

DUTY SHARED CONFIGURATION

Model Number	Duty in m ³ /sec @ given External Static Pressure (Pa)										
	0	50	75	100	125	150	200	250	300	350	400
TFA 200/200	0.18	0.16	0.16	0.14	0.14	0.12	0.1	0.02	-	-	-
TFA 200/250	0.22	0.2	0.19	0.18	0.17	0.16	0.14	0.12	-	-	-
TFA 200/300	0.28	0.26	0.15	0.24	0.22	0.2	0.18	0.17	0.12	-	-
TFA 250/400	0.4	0.36	0.34	0.32	0.3	0.26	0.2	0.14	-	-	-
TFA 250/500	0.42	0.38	0.36	0.34	0.32	0.3	0.24	-	-	-	-
TFA 250/600	0.52	0.5	0.48	0.46	0.44	0.42	0.38	0.34	-	-	-
TFA 300/700	0.68	0.64	0.58	0.54	0.44	0.4	-	-	-	-	-
TFA 350/850	0.8	0.78	0.74	0.66	0.6	0.46	0.2	-	-	-	-
TFA 350/1000	0.96	0.86	0.8	0.76	0.62	0.48	0.2	-	-	-	-
TFA 350/1200	1.14	1.12	1.1	1.1	1.08	0.98	0.82	0.5	0.01	-	-
TFA 400/1300	1.22	1.22	1.2	1.2	1.18	1.16	1.12	0.98	0.78	-	-
TFA 400/1500	1.42	1.42	1.4	1.38	1.38	1.36	1.26	1.12	-	-	-
TFA 400/1700	1.56	1.52	1.48	1.46	1.44	1.4	1.3	1.08	-	-	-
TFA 450/2500	2.2	2.14	2.06	1.94	1.78	1.68	1.44	1.1	-	-	-
TFA 550/3600	3.44	3.2	3.1	3.0	2.86	2.7	2.3	1.78	-	-	-

Electrical and Sound Data

Model Number	Running Current per Fan Motor (Amps)	Starting Current per Fan Motor (Amps)	Power per Fan Motor (Watts)	Induct Sound Power Levels dBW @ Octave Band Mid Frequency HZ								Noise Breakout Level dBA*	
				63	125	250	500	1K	2K	4K	8K	SSK***	DSK***
TFA 200/200	0.3	0.75	67	32	34	46	55	56	54	51	50	40	25
TFA 200/250	0.44	1.1	99	25	29	38	43	39	40	34	26	36	21
TFA 200/300	0.8	2.0	105	63	57	55	54	54	47	41	32	44	29
TFA 250/400	0.8	2.0	190	40	44	46	52	52	50	45	41	41	26
TFA 250/500	0.9	2.25	140	71	69	62	54	51	47	39	30	43	28
TFA 250/600	1.2	3.0	273	68	62	61	61	59	54	47	37	48	33
TFA 300/700	1.5	3.75	92	79	77	70	68	65	61	53	46	49	34
TFA 350/850	1.9	4.75	184	67	69	70	69	66	62	59	54	44	29
TFA 350/1000	2.3	5.75	300	71	72	73	72	70	66	62	57	48	33
TFA 350/1200	4.3	10.75	373	75	72	67	63	61	60	58	45	50	35
TFA 400/1300	3.5	8.75	300	81	78	73	69	67	66	64	51	55	40
TFA 400/1500	4.4	11.0	420	72	70	62	60	56	53	46	37	46	31
TFA 400/1700	3.5	8.75	300	76	74	66	64	60	57	49	41	53	38
TFA 450/2500	6.8	17.5	550	80	78	70	68	64	61	53	45	61	46
TFA 550/3600	4.3**	21.5**	1100	87	84	82	81	79	75	67	55	64	49

* The dBA quoted is the mean 'A' weighted sound pressure level measured at a distance of 3m. It is included for comparative purposes only and the actual sound level experienced will depend on the acoustic characteristics of the area being served.

Ductwork and Silencers also have a major influence on breakout noise and actual noise levels in the system.

** 380/415 V ac Three Phase Motor.

*** To obtain sound levels for twin fans running together as duty shared, add 3dB to the sound figures above.

Available Electric Heaters @ 220/240 V ac 1Ph & N, 50 Hz

Heater Capacity	1 kW	1.5 kW	2 kW	2.5 kW	3 kW	4 kW	5 kW	6 kW	7.5 kW
Running Current (Amps)	4.3	6.5	8.7	10.9	13	17.4	21.7	26	32.6

Available Electric Heaters @ 380/415 V ac 3Ph & N, 50 Hz

Heater Capacity	9 kW			12 kW			15 kW			18 kW			21 kW		
	R	S	T	R	S	T	R	S	T	R	S	T	R	S	T
Running Current (Amps)	13	13	13	17.4	17.4	17.4	21.7	21.7	21.7	26	26	26	30.4	30.4	30.4

Heater Capacity	24 kW			27 kW			30 kW			36 kW		
	R	S	T	R	S	T	R	S	T	R	S	T
Running Current (Amps)	34.8	34.8	34.8	39.1	39.1	39.1	43.5	43.5	43.5	52.2	52.2	52.2

To help select heater the following formula can be used:- Duty (m³/s) x 1.2 x Temp. Difference (°C) = Heater (kW)

Typical Part Code:

W TFA 350 / 1200 - 6kW – R&S or DS

Weatherproof

Twin Fan Fresh Air

Unit Size

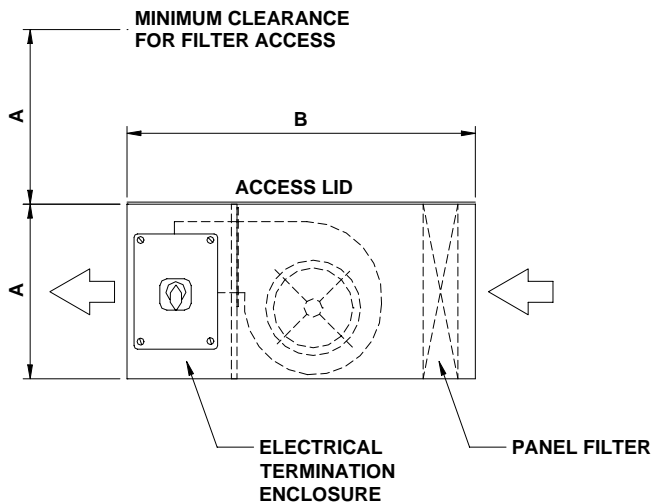
Duty Share

Run & Standby

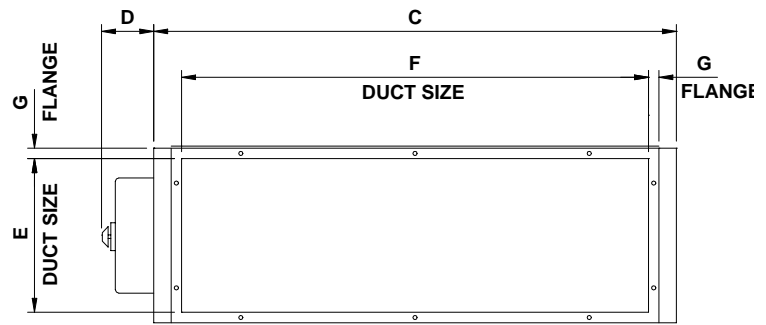
Electric Heater Size

Twin Fan & Motor Size

Dimensional Data



SIDE VIEW



END VIEW

Model Number	Dimensions In Millimetres									
	A		B	C		D	E	F	G	WEIGHT
	SSK	DSK		SSK	DSK					
TFA 200	200	250	450	650	650	100	166	570	15	30 Kg
TFA 250	250	300	600	850	850	100	210	770	15	35 Kg
TFA 300	300	350	600	1050	1050	100	260	960	20	40 Kg
TFA 350	350	400	700	1250	1250	175	310	1160	20	60 Kg
TFA 400	415	465	900	1250	1250	175	375	1160	20	70 Kg
TFA 450	450	500	900	1250	1250	175	410	1160	20	90 Kg
TFA 550	550	600	1100	1450	1450	175	500	1350	25	120 Kg

Options and Accessories available on request

VCD	Volume Control Damper	WL	Weather Louvre
PSD	Positive Shutoff Damper	WMSC	Wall Mounted Speed Controller
SC	Internal Speed Controller	EMT	Electronic Thermostat & Duct Sensor
BF	Bag Filter F5 to F9	TC	Thyristor Controller & Duct Sensor
HEF	High Efficiency Panel Filters F6	ACP	Deluxe Auto Changeover Panel
MT	Manometer c/w tappings	VM	Vertically Mounted
FPS	Filter Pressure Switch	CM	Ceiling Mounted
SIL	Silencers	CS	Circular Spigot Connections
R&S	Run & Standby Fans	SSK	Single Skin Construction s
DS	Duty Shared Fan	DSK	Double Skin Option

Unit 6, Viscount Court, Walworth Industrial Estate, Andover, Hampshire SP10 5NW England
 Telephone: 01264 333305 – Facsimile: 01264 333310 – Email: sales@pumaproducts.co.uk

www.pumaproducts.co.uk

Due to our policy of continued improvement and development, we reserve the right to alter designs and specifications without notice.

© Copyright 2006 – Puma Products Limited™ (Rev A)